

Test Report

Applicant's name : Qingdao Youmeng Home Furnishing Technology CO.,LTD
Address : NO.252, YANHE ROAD, HUANGDAO DISTRICT, QINGDAO CITY,
SHANDONG PROVINCE, CHINA
Manufacturer : Qingdao Youmeng Home Furnishing Technology CO.,LTD
Address : NO.252, YANHE ROAD, HUANGDAO DISTRICT, QINGDAO CITY,
SHANDONG PROVINCE, CHINA
Trade Mark..... :

垫博士

Test item description..... : Youmeng pressure-less high and low pillow

Model/Type reference..... : MHL001

Report Number : B1905TR8103R

Date of receipt of test item..... : May 13, 2019

Date(s) of performance of tests..... : May 13, 2019 ~May 21, 2019

Test Requested:

- (1) For compliance with RoHS directive 2011/65/EU to determine the Lead, Cadmium, Mercury, Chromium in the submitted sample.
- (2) Determination of Polybrominated Biphenyl (PBBs), Polybrominated Diphenyl Ethers (PBDEs), Phthalates (DBP, BBP, DEHP, DIBP) of the submitted sample.

Test Method:

- (1) With reference to IEC 62321-3-1:2013, scanning by XRF Spectroscopy
- (2) Wet Chemical test method:
 - With reference to IEC 62321-5:2013, determination of Lead, Cadmium, by ICP
 - With reference to IEC 62321-4:2013, determination of Mercury by ICP
 - With reference to IEC 62321-7-2:2017, determination of Hexavalent Chromium by UV-VIS
 - With reference to IEC 62321-6:2015, determination of PBBs and PBDEs by GC-MS
 - With reference to EN 14372:2004, determination of DBP, BBP, DEHP, DIBP by GC-MS

Test Results: Please refer to next page.

Conclusion:

The test result of submitted sample complies with the requirement of 2011/65/EU.

Signed for and on behalf of

Shenzhen Bory Technology Service Co., Ltd.


Usher Kuang
PSQ Executive

This Test Report is issued by the Company subject to its General Conditions of Service printed overleaf. Attention is drawn to the limitations of liability, indemnification and jurisdictional policies defined therein. The results shown in this test report refer only to the sample(s) tested unless otherwise stated and the sample(s) are retained for 30 days only. This Test Report cannot be reproduced, except in full, without prior written permission of the Company.

Test Report

Product description

No.	Sample of Description
1	Pillowslip(Polyester)
2	TPE elastomer material(LDPE)
3	White coating
3	zipper

Test Results:

Test Items	Test Method/ Equipment	MDL	EU ROHS Directive 2011/65/EU and its amendment Directive EU 2015/863
Lead(Pb)	Refer to IEC62321-5:2013.	2ppm	1000ppm
Cadmium(Cd)	ICP-OES/AAS	2ppm	100ppm
Mercury(Hg)	Refer to IEC62321-4:2017. ICP-OES	2ppm	1000ppm
Hexavalent Chromium(Cr(VI)) by Alkaline extraction	Refer to IEC 62321-7-2:2017. UV-VIS	2ppm	1000ppm
Polybrominated Biphenyls(PBBs)		---	---
Monobromobiphenyl		5ppm	
Dibromobiphenyl		5ppm	
Tribromobiphenyl		5ppm	
Tetrabromobiphenyl		5ppm	
Pentabromobiphenyl		5ppm	
Hexabromobiphenyl		5ppm	
Heptabromobiphenyl		5ppm	
Octabromobiphenyl		5ppm	
Nonabromobiphenyl		5ppm	
Decabromobiphenyl		5ppm	
Polybrominated Diphenylethers (PBDEs)		---	---
Monobromobiphenyl ether		5ppm	
Dibromobiphenyl ether		5ppm	
Tribromobiphenyl ether		5ppm	
Tetrabromobiphenyl ether		5ppm	
Pentabromobiphenyl ether		5ppm	
Hexabromobiphenyl ether		5ppm	
Heptabromobiphenyl ether		5ppm	

This Test Report is issued by the Company subject to its General Conditions of Service printed overleaf. Attention is drawn to the limitations of liability, indemnification and jurisdictional policies defined therein. The results shown in this test report refer only to the sample(s) tested unless otherwise stated and the sample(s) are retained for 30 days only. This Test Report cannot be reproduced, except in full, without prior written permission of the Company.

Test Report

Octabromobiphenyl ether	5ppm
Nonabromobiphenyl ether	5ppm
Decabromobiphenyl ether	5ppm

No.	Content (ppm)						
	Pb	Cd	Hg	Cr	PBBs	PBDEs	Wet Chemical testing
1	BL	BL	BL	BL	BL	BL	Not tested
2	BL	BL	BL	BL	BL	BL	Cr ⁶⁺ : Negative
3	BL	BL	BL	BL	BL	BL	Not tested

Test Items	Content					
	4	/	/	/	/	/
Lead(Pb)	N.D.	/	/	/	/	/
Cadmium(Cd)	N.D.	/	/	/	/	/
Mercury(Hg)	N.D.	/	/	/	/	/
Hexavalent Chromium(Cr(VI)) by Alkaline extraction	N.D.	/	/	/	/	/

This Test Report is issued by the Company subject to its General Conditions of Service printed overleaf. Attention is drawn to the limitations of liability, indemnification and jurisdictional policies defined therein. The results shown in this test report refer only to the sample(s) tested unless otherwise stated and the sample(s) are retained for 30 days only. This Test Report cannot be reproduced, except in full, without prior written permission of the Company.

Test Report

Test Items	Test Method/ Equipment	MDL	EU ROHS Directive 2011/65/EU and its amendment Directive EU 2015/863
Dibutyl phthalate (DBP)	Refer to BS EN 14372:2004, GC-MS	30ppm	1000ppm
Butylbenzyl phthalate (BBP)		30ppm	
Di-(2-ethylhexyl) Phthalate (DEHP)		30ppm	
Di-iso-butyl phthalate (DIBP)		30ppm	

No.	Content (ppm)			
	DBP	BBP	DEHP	DIBP
1	BL	BL	BL	BL
2	BL	BL	BL	BL
3	BL	BL	BL	BL

Note:

1. BL=Below Limit
2. N.D.=Not Detected (Not detected is reported when the reading is less than detection limit value.)
3. "IN" expresses the inconclusive region, and further chemical testing to confirm whether it complies with the requirement of RoHS Directive.
4. Negative=absence of Cr(VI) in the metallic sample
Positive=presence of Cr(VI) in the metallic sample
(The tested sample should further verify by boiling-water-extraction method if the spot test result cannot be confirmed)
Boiling-water-extraction:
Negative=absence of Cr(VI) in the metallic sample
Positive=presence of Cr(VI) in the metallic sample
Boiling-water-extraction solution is equal or greater than 0.02mg/kg with 50cm² sample surface area.
5. MDL=Method Detection Limit

Remark:

- (1) (a) It is the result on total Br while test item on restricted substances is PBBs/PBDEs. It is the result on total Cr while test item on restricted substances is Cr⁶⁺.
- (b) Results are obtained by EDXRF for primary screening, and further chemical testing by ICP(for Cd, Pb, Hg), UV-VIS(for Cr(VI)) and GCMSD (for PBBs, PBDEs) is recommended to be performed. If the concentration exceeds the below warning value according to IEC 62321 Ed.1 111/95/2nd CDV (unit: mg/kg)

Element	Polymer	Metal	Composite Materials
Cd	$BL \leq (70-3\sigma) < X < (130+3\sigma)$ $\leq OL$	$BL \leq (70-3\sigma) < X < (130+3\sigma)$ $\leq OL$	$LOD < X < (150+3\sigma) \leq OL$

This Test Report is issued by the Company subject to its General Conditions of Service printed overleaf. Attention is drawn to the limitations of liability, indemnification and jurisdictional policies defined therein. The results shown in this test report refer only to the sample(s) tested unless otherwise stated and the sample(s) are retained for 30 days only. This Test Report cannot be reproduced, except in full, without prior written permission of the Company.

Test Report

Pb	$BL \leq (700-3\sigma) < X < (1300+3\sigma)$ $\leq OL$	$BL \leq (700-3\sigma) < X < (1300+3\sigma)$ $\leq OL$	$BL \leq (500-3\sigma) < X < (1500+3\sigma)$ $\leq OL$
Hg	$BL \leq (700-3\sigma) < X < (1300+3\sigma)$ $\leq OL$	$BL \leq (700-3\sigma) < X < (1300+3\sigma)$ $\leq OL$	$BL \leq (500-3\sigma) < X < (1500+3\sigma)$ $\leq OL$
Br	$BL \leq (300-3\sigma) < X$	---	$BL \leq (250-3\sigma) < X$
Cr	$BL \leq (700-3\sigma) < X$	$BL \leq (700-3\sigma) < X$	$BL \leq (500-3\sigma) < X$

(c) OL=Over Limit, BL=Below Limit. LOD=limit of Detection, ---=not conducted.

(d) The XRF screening test for RoHS elements- The reading may be different to the actual content in the sample be of non-uniformity composition.

(2) (a)mg/kg=ppm=0.0001%, N.D.=not detected(<MDL),

(b)Unit and Method Detection Limit(MDL) in wet chemical test.

Test Items	Pb	Cd	Hg
Units	Mg/kg	Mg/kg	Mg/kg
MDL	2	2	2

The MDL for single compound of PBBs & PBDEs is 5mg/kg and MDL of Cr⁶⁺ for polymer & composite sample is 2mg/kg.

(c) According to IEC 62321:2009 Ed.1 111/95/2nd CDV, result on Cr⁶⁺ for metal sample is shown as Positive/Negative.

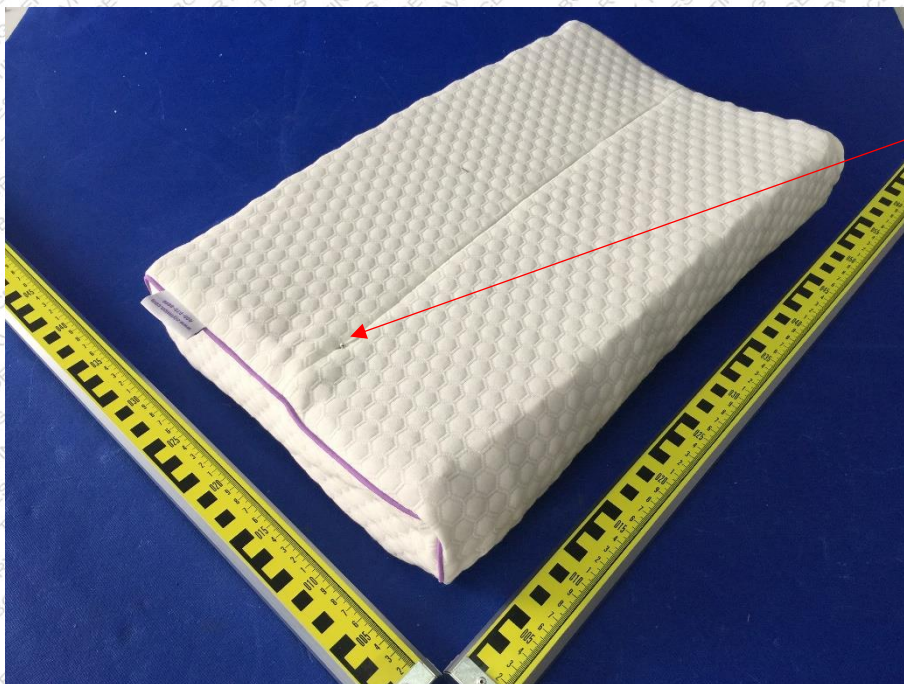
Negative=Absence of Cr⁶⁺ coating, Positive= Persence of Cr⁶⁺ coating.

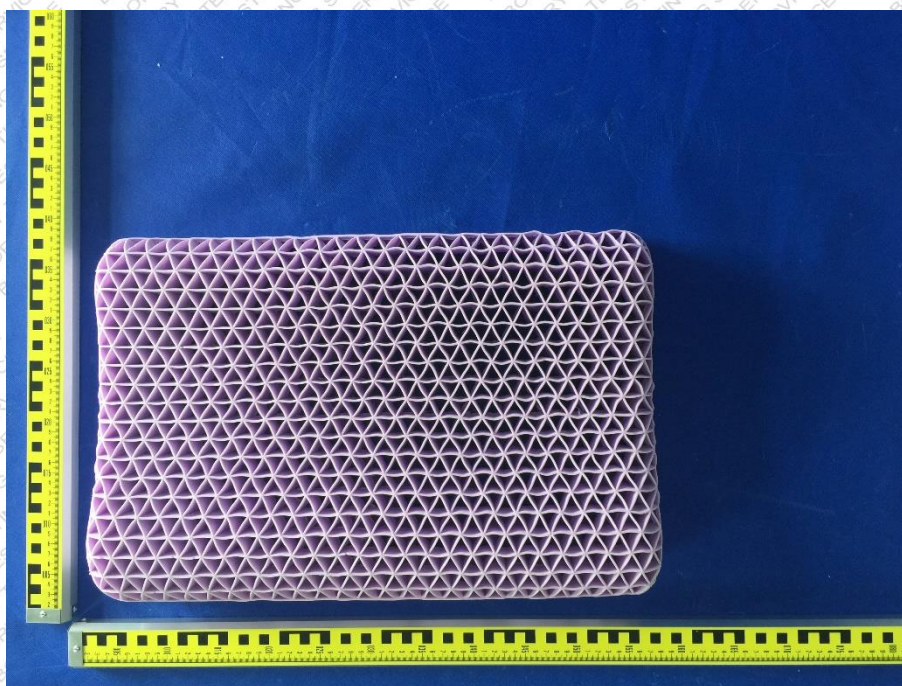
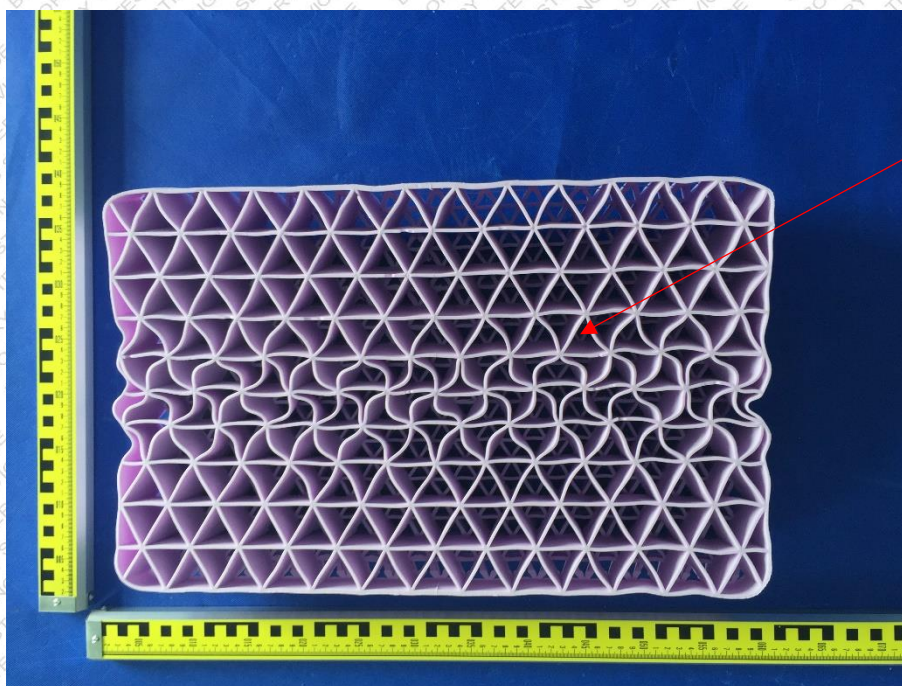
(d)According to 2005/717/EC, DecaBDE is exempt.

This Test Report is issued by the Company subject to its General Conditions of Service printed overleaf. Attention is drawn to the limitations of liability, indemnification and jurisdictional policies defined therein. The results shown in this test report refer only to the sample(s) tested unless otherwise stated and the sample(s) are retained for 30 days only. This Test Report cannot be reproduced, except in full, without prior written permission of the Company.

PHOTOS:

Model: MHL001





*****End of Report *****